



A COMPLETE BUILDING SOLUTION



Product Guide

Tile Adhesive
Epoxy Grout

Wall Putty
White Cement

Waterproofing Master
Premium SBR Latex

Acrylic Waterproofing
Membrane (White & Black)

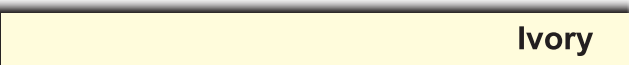
A COMPLETE BUILDING SOLUTION



COLOUR SHADE CARD



White



Ivory



Golden Yellow



Terra Cotta



Deep Brown



Kesar



Black



Pink



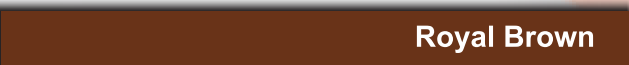
Dark Blue



Chocolate Brown



Royal Hamp



Royal Brown



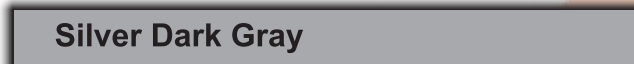
Olive Green



Royal Jaisalmer



Royal Terra Cotta



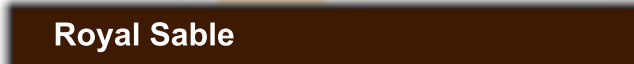
Silver Dark Gray



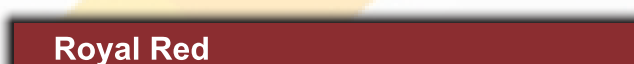
Royal Sand Stone



Royal Sky Blue



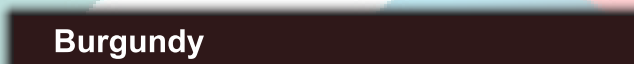
Royal Sable



Royal Red



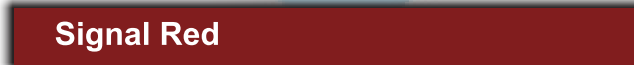
Moca



Burgundy



Orange



Signal Red



Dark Gray



About Us

Profile

- Established in 2004. Over the years emerged as a dominant (N.G.) Indian Markets with a capacity of one million tones per annual.
- Rapid raise in business turnover achieved by delivering dependable, consistent cement quality which has become a benchmark of innovative research & product improvement.
- A Leading Manufacturer of cement participating in infrastructure development of Gujarat.
- Energy conscious & environment friendly organization striving to deliver best value to its customers with quality product and dedicated services.
- 95 Branches, and a mammoth network of over 7000 dealers in India.
- Volume leader in India Market.
- Consistent performance & wide acceptance by customers.

Mission

The Company has set the following mission in line with its vision :

- To Sustain its position as one of the most efficient manufacture in world.
- To continually add value to its product and operations meeting expectations of all its Associates.
- To hereness sustain ability through low-cost philosophy.
- To drive down cost through innovative practices.
- To continually build competencies for future growth.
- To be a responsible corporate citizen with total commitment to communities and society within which we operate.

Vision

Lion Industries aims to be India's most recognized enterprise through "Best in Class Performance" and by Maintaining "Low Coast" Philosophy, Thereby making it a progressive organization that all associates are proud to deal with us.



Product Detail Index

Admixture

Lion SNF Admixture	04
Lion L 71	05

Waterproofing Master

Lion Double +	07
111 Lion Ultra Bond (SBR)	08
Lion Premium SBR Latex	10
Lion Wiper	11
Lion Seal & Coating	13
Lion Crack Seal	15

Tile Adhesive

Lion ETA	17
Lion Purple Adhesive	18
Lion Premium Adhesive	19
Lion Hibond Adhesive	20
Lion Glass Mosaic Adhesive	21
Lion Tile Grout	23
Lion Stone Filler	24
Lion Binder	25
Lion Grout Admix Power A1	26
Lion L-Poxy Epoxy	27
Lion L-Poxy Epoxy Sparkle	28
Lion Long Lastic	29
Lion Tile Cleaner	30

Ready Mix Mortar

Lion Jointer	31
Lion Plastering	32
Lion LP 2	33
Lion Floor Hardener	35
Lion King White Cement	36
Lion Wall Touch Wall Putty	37

Acrylic & Membrane

Lion Precast Hardener	38
Lion Eco Tex (Texture Plaster)	39
Lion Prime Coat	40
Lion Tuff Create	41
Lion Cool Coat	42
Lion Heat Guard	43
Lion Easy	44
Lion Salt Guard	45
Lion PP Fiber	46
Lion Power Bond	47
Lion Epoxy Flooring	48



Admixture



Lion SNF Admixture

Naphthalene based super plasticizer as per
ASTM-C, Type A and F Super Plasticizing
water Reducing admixture.

Description : Lion SNF Admixture is a Sulphonated Naphthalene formaldehyde polymer based high range water reducing admixture which is to be added to the mixture at the job site or during the batching process to improve the placing and finishing characteristics of concrete. There are no added chlorides and Lion SNF Admixture will not promote corrosion of steel. Lion SNF Admixture is specially designed to give high water reductions up to 15% without loss of workability and reduce permeability to produce huge quality concrete. It is compatible with air entraining agents, water proofing agents, and many other admixtures, however, each material should be added to the concrete separately.

Advantage :

- Reduces W/C ratio up to 15%.
- Improve slump and reduce permeability.
- Lower water requirement for given workability.
- Easier placing, better compaction and finishing.
- Chloride content.
- Lower cement content for specified strength.
- Increases strength and durability of concrete.
- Higher cohesion increased workability.
- Reduces risk of segregation and bleeding.

Recommended For :

- General Purpose Ready Mix Concrete.
- Can be used in precast concrete work.
- Mass concrete work.
- Low W/C ratio concrete.
- Structural R.C.C. concrete.
- High Slump, Flowable concrete.
- Heavy industrial construction.

Technical Specification :

Form	: Liquid	Colour	: Dark Brown
Chloride Content	: Nil as per is : 456	Compressive Strength	: 43-45 N/mm ²
PH	: 7-8		

Dosage : Lion SNF Admixture can be dosed in the range of 0.4 % to 1.2 % by weight of cement. The dosage can further be enhanced to 0.8 depending on climatic situations. But it is always advisable to go for trial mix to determine the optimum dosage.

Packing : Available in 200 ltr Container.

Shelf Life : 1 Year in original unopened packing.



Lion L - 71

Poly Carboxylate Ether for
Superplasticizer (PCE)



Description : Lion L71 is PCE that has excellent water retention and slump Retention performance of concrete. In General it can be blended with other water reduction type PCE in order to enhance concrete quality. It also can be used it self especially for the job site where requires much longer slump retention.

Area of Application : Concrete admixture excellent water retention.

Features & Benefits : • Excellent slump retention for all grade concrete to be used with other water reducers. • Applicable for all grade concrete to be used. • With other water reducers. • High workability with out bleeding or segregation. • Provide Fresh concrete with excellent retention more than 120 minutes. • Reduction of labour costs by high workability of concrete.

Method of Applications: • Lion L 71 is recommended to be used blending with other PCE having high water reduction. For the job site where requires much longer slump retention, the dosage ratio of Lion L 71 should be increased up to 75%. • The optimum dosage of Lion L71 may depend on specific requirements of concrete properties and materials. So, it is determined by trails using the materials and conditions.

Compatibility : • Lion L 71 is Compatible with all of PCE products. • To achieve higher water reduction, you may blend with other PCE which has its specific properties.

Precaution & Limitations : • Lion L 71 contains no hazardous materials and is completely transport class free. • However, it is recommended to use standard handling procedureds with the product. we arglove sand eye protection and wash splashes to the skin with soap and water at the end of shifts oar at breaks. For further information consult the material Safety data Sheet for this product.

Packing : 200 kg Drum.

Shelf Life : Best before one years from the date manufacture when in sealed pack and stored under proper condition. Sore in a cool & dry place in unopened condition away from direct sunlight





WATERPROOFING MASTER

Lion Double Plus



Description : Lion Double Plus is specially formulated integral liquid waterproofing compound composed of surface active plasticizing agent, Polymers & Additives. It is used as an additive for cement concrete, mortar & plasters. It makes concrete cohesive and prevent segregation.

Area of Application : Waterproofing of concrete and sand-cement mortars used in Basements, Terrace, Roof Slabs and Screeds, Water Tanks & Water Retaining Structures, External Plastering, Internal Plastering Bathrooms and balconies, Sumps and Drains.

Features & Benefits : **Corrosion Resistant :** Makes concrete more cohesive, hence protects steel better against corrosion.

Compatibility : Being a liquid, easily dispersible & compatible with concrete / mortar mixes.

Permeability : it reduces the permeability of water in to concrete.

Strength : The setting time and compressive strength of the concrete remains within the specification limits.

Shrinkage : Reduce shrinkage crack development in plaster & concrete.

Workability : Improves workability of freshly mixed cement concrete.

Durability : Increases durability by improving waterproofing of concrete.

Method of Application : Charge cement & Aggregates to concrete mixer as per the mix design, mix in dry state for 1-2 minutes. • Start addition of 75-80% mixing water & mix for 2-3 minutes. • Lion Double Plus is added as per the recommended dosage in to the remaining mixing / gauging water than add to concrete mixer & mix for another 2 minutes. • Place the concrete or apply plaster, as needed. • Cure the applied mortar or concrete as per good construction practices.

Precaution & Limitations : Do not add Lion Double Plus directly to dry cement & aggregate Mix. • Maintain water Cement ratio as low as possible. • Do not increase the dosage of Lion Double + than the recommendation.

Packing : 200 ml, 500 ml, 1 ltr, 5 ltr, 10 ltr, 20 ltr, 50 ltr and 200 ltr.

Application Mixing : 200 ml per 50 kg bag of cement.

Self Life : Best before Two years from the date manufacture when in sealed pack and stored under proper condition. Store in a Cool & Dry place in unopened condition away from direct sunlight.

Technical Information :

Properties	Result
Appearance Free flowing liquid	Colour Wine Red
Sp. gr. @ 250C	10.04-1.060
Non Volatile content	13.4-14.2%
pH value	9-13
Setting, Time, minutes	30-60Min.
Chloride content	Max. 2.00%
Water permeability	Passes
Compressive strength N/mm ²	As per the standard IS : 2645 : 2003





111 Lion Ultra Bond (SBR)

Description : 111 Lion Ultra based on modified styrene butadiene latex supplied as a ready to use bonding agent in liquid consistency. It is used for repair of spalled concrete Floors, Columns, Beams, Chhajjas, Slabs & Waterproofing of Toilets & Bathrooms, Small terraces etc. as it bonds strongly to old & new concrete and to plasters. It reduces shrinkage, prevents cracking, dust pick up & improves abrasion resistance.

Area of Application : For concrete repairs - Spalled Concrete of Floors, Columns, beams, Chajja, Slabs, parapets etc. • For Waterproofing Small roof terraces, Sunken Portions of Toilets & Bathrooms, Chajja & Lift pits, Balconies. • As a Bond Coat for Bonding of New concrete to old concrete, Masonry Stone work, Palstering. • For Cladding Fixing or re-fixing of slip bricks, Tiles, Stone & Marble bedding. • As external rendering Weatherproofing & Frost resistant render. • As bonding slurry coat for pinhole treatment of concrete surface.

Features & Benefits : **Multipurpose :** It is multipurpose & economical product, easy to use.

Cracking : It prevents cracking by improving flexural strength.

Hardness: Improves the Hardness & prevents dust generation.

Shrinkage : Reduces drying & Again Shrinkage crack.

Bonding: Bond strongly to concrete, Masonry, Stone work, Plasters, Cementitious surface.

Erosion & corrosion : Improves erosion resistance & prevents corrosion.

Abrasion Resistance : Improves abrasion resistance of the cement mix.

Grouting : Reduces viscosity of cement injection grout for better fluidity & bonding.

Method of Application : **(1) Surface Preparation :** • Clean the surface with wire brush or Scrubber to remove hidden dirt, Loose particles & dust. Decrease the surface by using suitable solvents. • Repair the spelled concrete portion by saw, cutting the extreme edges of the repair location to a depth of at least 10 mm to avoid feather edging & to provide strong bond. • Clean the concrete surface to remove any contamination where breaking is not possible. Roughen the surface by light scabbling or grit blasting. • For Priming of concrete substrate, the surface should be thoroughly saturated with potable water Remove any excess of water prior to application over any excess of water prior to application.

(2) Waterproofing Coating : • For a waterproofing coating Mix 111 Lion Ultra Bond : Cement in the ratio 1 : 1.5 by Volume. • Mix for 2-3 Minutes to avoid air entrapment. Keep on Slowly adding cement to 111 Lion Ultra Bond until the required consistency is achieved. • Brush Apply 2 coats of the mix in a span of 4-6 hours on the prepared concrete substrate. • Overlay the coating with a protective screed to the desired slope & Thickness.





- (3) Bonding Primer :** • For a bonding primer coat of 111 Lion Ultra Bond Mix : Cement in the ratio 1 : 1.5 by volume.
 • Brush apply 1 Continuous coat of the mix on the prepared concrete substrate. • Ensure to overlay the repair mortar when the bond coat is still tacky.
- (4) Repair Mortars & Renders :** A suitable mix ratio for patching repair mortar or render is as follows : Mix design Portland cement : 50 kg washed sand : 150 kg, 111 Lion Ultra Bond : 6-7.5 kg & Water : 10 Lit.
- (5) Floor Screeds & PCC :** • A suitable mix ratio for patching repair mortar or render is as follows : Mix design Portland cement: 50 kg Washed sand : 75 kg, 6 mm downsize aggregates : 75 kg, 111 Lion Ultra Bond : 6-7.5 kg & Water : 10 Lit.
- (6) Mixing & Application :** A forced action mixer is essential (PAN Mixer) & recommended to ensure that 111 Lion Ultra Bond Mortar is thoroughly mixed. Use a suitable sized drum with heavy-duty electrical drill machine fitted with spiral paddle mixer at slow speed of 400-500 rpm. • Hand Mixing is permissible only for 25 kg or less quantity. • Charge the mixer with required quantity of clean & dry sand (or coarse aggregates as needed), cement & mix for 1-2 minutes, then add the recommended dosage of 111 Lion Ultra Bond dispensed in water which is pre-batched. Mix for 2-3 minutes to avoid air entrapment. Keep on slowly adding water until the required consistency is achieved.

Technical Information :

Application	Composition	Quantity of 111 Lion Ultra Bond	Consistency & thickness
1. Patching & repair mortar	OPC 50 kg Washed Sand : 150 kg water 10 Lit.	6-7.5 kg	Mortar consistency 5-25 mm thickness
2. PCC / Floor Screed	OPC 50 kg Graded & Washed sand 75 kg Coarse aggregates (6mm down size) 75 kg Water 10 Lit.	6-7.5 kg	Mortar consisten 10-40mm thickness
3. Waterproofing coating	OPC 50 kg	10 kg	Brushable consistency
4. Bonding primer	OPC 50 kg	15 kg	Brushable consistency
5. Slurry for pin hole treatment & Grouting	OPC 50 kg	5 kg	Slurry consistency

Dosage : • As a waterproofing coating mix proportion by volume: 1 : 1.5 (111 Lion Ultra Bond : Cement) • As a mortar modifier 10-15 % of 111 Lion Ultra Bond by weight of cement. • As a bonding agent-mix proportion by volume: 1:1 (111 Lion Ultra Bond : Cement)

Packing : • 200 gm, 500 gm, 1kg, 5 kg, 10 kg, 20 kg, 50 kg and 200 kg.

Coverage : • As waterproofing coating 22-25 sq ft. / kg in 2 Coats • As a Mortar Modifier 6-7.5 kg of 111 Lion Ultra Bond per 50 kg of cement • As a bonding agent 45-50 sq ft./kg per Coat.

Precaution & • Recommended dosage to be followed to achieve desired results. • When working in hot temperature conditions, extra water may be added to the repair mortar to compensate for the evaporation loss & make the mortar workable.

Self Life & Storage : • Best before one and half years from the date manufacture when in sealed pack and stored under proper condition. • Store in a cool & dry place in unopened condition away from direct sunlight.



Lion Premium SBR Latex

Description : Lion Premium SBR Latex is based on Modified styrene butadiene latex used for high performance applications in waterproofing and repairs. It is used for high performance applications in waterproofing and repairs. It is used for repairs of spelled concrete such-floors, columns, beams, chhajjas, slabs & waterproofing for toilets, bathrooms & terraces. It bonds strongly to old & new concrete or plaster.

Areas of Applications : **As bond coating :** Plaster to Plaster, concrete to concrete, Plaster over brick masonry. As waterproof repair Plaster.

As crack repair : Plaster crack more than 5 mm, in gaps developed between masonry and rcc members.

For Cladding : Fixing or Refixing of Slip bricks, tiles, Stones & Marble.

Method Applications : **Surface Preparation :** • All Substrates should be cleaned & free of dust, plaster, oil, paint, grease, corrosion deposits & any other laiternce. • Cleaning should be done by wire brush or other mechanical Means.

Bond Agent : Mix Lion Premium Latex, water and cement in 1:4:7 proportion by volume and apply this mix with brush in a single coat over the clean any surface.

Render, Patching & Crack Repair Mortar : Mix 5 kg of Premium latex with 15 ltr of water 50 kg cement and 150 kg sand. Fill the crack with above prepared mortar. Compact it into the crack fully and trowel finish to level.

Waterproofing Coating : Mix Lion Premium latex, water and cement in 1:4:7 proportion by volume. Apply 1st coat when the surface is in saturated dry condition and allow it to dry for 4 to 6 hours. Overlay the 2nd coat with screed / plaster for protection and finish.

Coating for "Salt Petre" Free Plaster Brick Masonry : • Mix Lion Premium Latex, Water and Cement in 1:4:7 proportion by volume. Brush apply the 1st coat on brick. Apply 2nd coat after 1st coat is dry. When 2nd coat is tacky, place plaster as per instructions.

Packing : 200 gm, 500 gm, 1 kg, 5 kg, 10 kg, 20 kg, 50 kg and 200 kg.

Self Life : Best before Two years from the date manufacture when in sealed pack and stored under proper condition.

Store in a Cool & Dry place in unopened condition away from direct sunlight.





Lion Wiper

Description : Lion wiper is composed of high quality acrylic emulsion polymer, light fast & weather durable pigments, properly selected & graded fine fillers, many additives & water as a medium. It is used as a waterproofing & protective coating for exterior walls of the buildings because it forms higher film thickness, has excellent flexibility, breathing properties, water resistance, crack-bridging ability, weathering durability and an excellent resistance to the growth of microorganisms.

Areas of Applications : All types of exterior masonry surfaces, concrete, cement sand renderings, etc.

- Features & Benefits :**
- Film thickness-Higher film thickness provides resistance to the movements of structures, gives crack bridging ability & waterproofing properties.
 - Flexibility-Flexible and covers hairline cracks(upto 0.5 mm) effectively so that no ingress of water.
 - Toughness-Tough films withstands wind driven rain.
 - Elasticity-High elasticity easily withstands stress caused by thermal expansion & contraction (>100% elongation at 100-110 micron OFT).
 - Ready to use-No dilution is required hence ensures desired film thickness built-up without affecting the performance.
 - Microbial resistance-Resistance to fungus and algae hence maintains the aesthetic value.
 - UV resistant-Resistance to UV (Sun light) hence coating has longer life.
 - Dirt pick up-Very low dirt pick up & can be cleaned easily hence maintains the aesthetics.
 - Breath ability - Permeable to water vapor.
 - Ease of application -User friendly, easily applicable by brush, roller or spray.
 - Toxicity - It is Non-toxic.

Method Applications : **1. Surface Preparation**

- All new cement-sand renderings /concrete surfaces should be allowed to age 6 to 8 weeks before surface coating.
- Surface for treatment must be thoroughly cleaned of all latence, loose material, oil, grease, etc. by mechanical means such as wire brushing & shot blasting.
- Finally vacuum cleaning of all loose solids and liquids can be done, if required.
- All surface cracks up to 5 mm width should be filled up with Lion crack seal. Cracks more than 5 mm and all separation gaps should be filled up with Lion Ultra Bond modified mortar or as specified.





2. Application :

- Use Lion Wiper directly from the container. Stir contents well before use.
- Apply two neat coats of Lion wiper without dilution by brush or roller at a time interval of 5-6 hours.
- For enhanced protection, apply additional coat of Lion Wiper on rain lashing walls, chajjas and parapet walls.
- Allow the coated surface to air cure fully for 7 days.

Precaution & Limitation :

- Do not dilute Lion Wiper.
- Do not apply when ambient temperature is below 10°C or above 45°C.
- Do not apply in direct sunlight or during rains.
- Adhesion property may get affected over poor quality putty and very smooth surfaces.

Packing Coverage :

- 1 Ltr and 5 Ltr.
- 3.0 to 3.5 m² per liter for 2 coats*

*Coverage may vary depending upon the texture and porosity of the surface

Shelf Life & Storage :

- Shelf life is 18 months from the date of manufacturing in unopened conditions.
- Store in a cool and dry place.
- Keep away from direct sunlight and heat

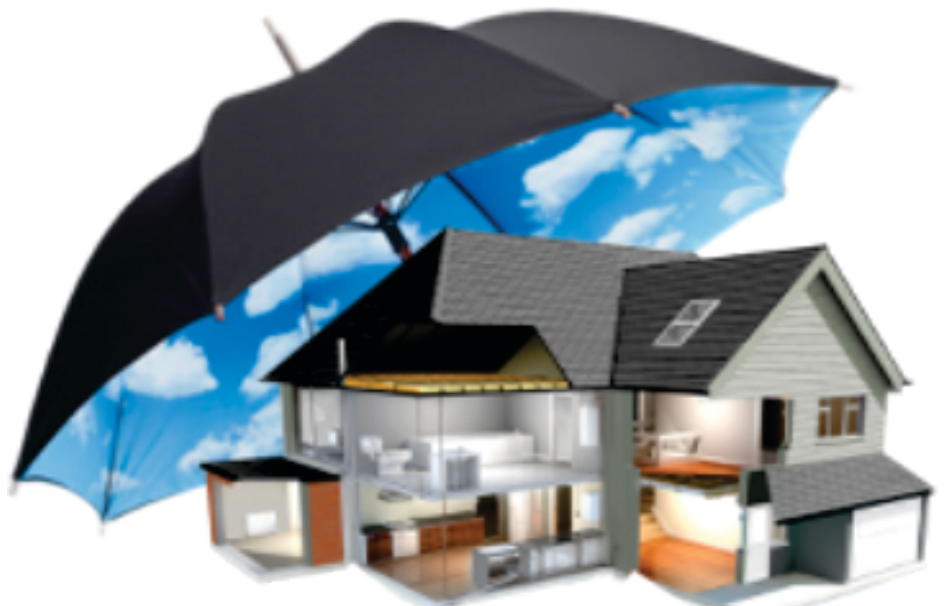
Health & Safety Precautions :

- Skin Contact : Wash skin with soap & water. Remove contaminated clothes.
- On eye contact: Immediately splash eyes with plenty of water. Consult Physician if irritation persists.
- Ingestion : Do not induce vomiting. Never give anything by mouth to an unconscious person. Call a Physician.

Other Products

Categories Available :

Lion brings the Widest range of Construction Material & Chemical.



Lion Seal & Coating



Description : Lion Seal & Coating is Cement based, Single Component, Polymer Modified, Flexible, Elastomeric waterproof Coating for Concrete and Masonry Surface. Lion Seal & Coating is available as a dry powder, and is to be mixed with water before use. It is grey in colour and easily applied by brush or sprayed by spray Machines.

Areas of Applications :

- Terrace Waterproofing.
- Sloping Roofs and Chajjas.
- Plastered masonry, External walls.
- Overhead and underground water tanks.
- Swimming pools.
- Toilets & Bathrooms.
- Basements.
- Tunnels, canals, dams etc.

Features & Benefits :

- Heavy duty waterproof coating system on new and existing surfaces.
- Forms flexible and washable membrane soon after application.
- Highly effective for positive & negative sides of hydrostatic pressure.
- Positive Side impermeability : 5-7 Bar.
- Negative Side impermeability : 1.5 Bar.
- Effectively seals all existing cracks in the surface.
- Crack bridging Capability : 0.5 mm. Good resistance against UV, infrared Rays.
- Strong adhesion with all Cementitious surfaces including China Chips.
- Non-Toxic, hence suitable for all types of water retaining structures.
- Ease of handling, Mixing & Application.
- Freedom from fungus / moss, improved life of finishing coats and aesthetics.

Method Applications :

- Lion Seal & Coating can be applied to the surface manually by brush. After application of 1st Coat, allow a gap of minimum 2 hours, before the subsequent coat and it must be applied in perpendicular direction to the first coat.
- Lion Seal & Coating can be applied by spray machine also. For large areas use of spray machine is recommended for better speed and economy.
- Care should be taken to avoid application under direct sun light. The appropriate application time for the product is either early morning or late evening. This is to ensure that the water which is used for mixing does not evaporate fast and the product is able to develop the design properties.
- In case of U/G tanks, O/H Tanks or basement, it is quite possible that drying time may increase more than 2 hours. In such cases, ensure that first coat is dried properly before the application of the second coat.
- It is advised to use brush with soft bristle after the application the brush should be cleaned properly.





- Packing** : 1 kg.
- Application Mixing** : It is very Important that proper and thorough mixing of the “ Lion Seal Coating “ is done with water before use. It is advisable to use mechanical stirrer for uniform and thorough mixing and to save time and labour.
Take a clean vessel / bucket which does not have any hole or cut and add some water in the empty vessel to ensure no powder gets stuck on the bottom of the vessel and put required quantity of “ Lion Seal and Coating” in it.
Mixing ratio-Maixing water shall be 30-35% of the weight of powder.
Mix both thoroughly to get uniform paste. Ensure that no powder is left unmixed at the bottom of the vessel. The slurry is now ready for application.
It is desirable to use the material within 2 hours.
For bigger jobs, It is advisable to use mechanical Stirrer and Spray Machine. Proper care shall be taken at the time of mixing and spraying to ensure better result.
- Coverage** : The Coverage of the product depends upon the surface condition, its roughness and absorption. In normal condition, the coverage of Lion seal & Condition 10-12 square feet per kg for two coats.
- Precaution & Limitation** : Proper slopes and outlets to drain out rain water are essential.
Mix just enough quantity that can be used within 2 hours so as to avoid wastage of the product.
Additional water should not be added to already mixed material.
In order to get best results, it is recommended not to use “ Lion Seal & Coating” in direct sunlight to avoid unnatural evaporation which may lead to cracks.
Average thickness of each coating should not be more than 0.5-0.8 mm. If required, number of coats may be, increased to achieve higher thickness.
- Shelf Life** : Factory sealed bag of this product are guaranteed to be of first quality for Two (2) year. If stored in the ground in a dry area.





Lion Crack Seal

Description : • Lion Crack Seal is a specially formulated repair mortar designed to fully meet the requirement of effectively. • Repairing cracks In plasters and in concrete, avoiding the use of costly sealants, plaster and putties. • Lion Crack Seal is a dry powder when mixed with water it forms a creamy consistency mortar which is ready for use in repairing cracks and repairing plasters. • Lion Crack Seal is reinforced with alkali resistant fibers .

Areas of Applications : • Lion Crack Seal repairing cracks In plasters and in concrete, avoiding the use of costly sealants, plaster and putties.

Features & Benefits : • Lion Crack Seal is ideally suited for repairing of superficial plaster cracks as well as structural cracks.

- Lion Crack Seal can be used for repairing ceiling cracks and plasters with easy because of its viscosity. Cracks arising due to plasters cracking at junctions of wall and column or brick work and soffit of beam Can be effectively sealed.
- Cracks at parapet wall junction and roof slabs are also sealed with Lion Crack Seal. The product suitable for rendering .

Method Applications : It is essential that the surface of the concrete to be repaired is sound, clean and uncontaminated. Chase the crack and form a neat "V" shaped groove at least 6 mm wide on surface. Damaged plasters can be Cut out in more or less square sides . Defective material must be removed carefully using reducing tools, needle guns or sharp tap is and chipping hammers Force must. Not be applied as it will damage the sound material beneath .

Application Mixing : Just add 27%-30% water in 1kg bag.

Packing : 1 kg bag (Gray and White)

Coverage : In crack Repair 1 kg of Lion crack seal repairs 14 linear feet of crack chased to width of 6mm.

Precaution & Limitation : • Contains Portland cement and silica sand may irritate eyes and skin. Avoid contact with eyes or prolonged contact with skin. In case of contact, flush thoroughly with water.

- Do not take internally. Silica sand may cause cancer or serious lung problems. Avoid breathing dust. Wear a respirator in dusty areas.
- Protect finished work from traffic or damage by other trades for an extended period of time during cold weather conditions. At room temperature conditions 70 °f (20°C), protect overnight.
- Keep out of reach of children.

Shelf Life : Factory sealed bag of this product are guaranteed to be of first quality for one (1) year* if stored off the ground in a dry area.





Tile Adhesive

Lion ETA

LT - 11 Economical Tile Adhesive



Description : It is Polymer modified multipurpose Pre-packed tile adhesive for multipurpose application. ETA self curing and having excellent waterproofing properties. It is specially made for Interior flooring of Ceramic Tiles, Vitrified Tiles on Plaster Work concrete etc.

Surface Treatment : Surface must be properly clean, away from grease, oil and dust. Surface must be sufficient flat to permit the specified flatness of finished tiling. Not recommended to use on metal, wood, paint and fully glazed backgrounds. (For any requirement please contact company's technical Department.)

Advantages : • Highly cost effective. • Easy to work for various application. • Ideal for any cementitious surface to fix new ceramic, vitrified and cementitious tiles. • Improve strength & gives Strong and durable bonding with surface. • Self curing properties. • Economical & reliable (E-corel formulation).

Recommended Application : • After mixing spread the adhesive paste on the background immediately. Spread only adhesive mix that can be fixed within 20 minutes. • Push tile firmly on the background ensuring the good contact is maintained with the back of each tile. • Lion Power admixture may be used in conjunction with ETA to impart flexibility, enhance adhesion and durability and reduce water permeability. Allow adhesive to dry before grouting. Always use notched trowel for high performing results.

Technical Specifications :

- Colour : Gray
- Base : Polymer modified Cementitious
- Mixing ratio. : 1 :3 or 1 :3 .5
- Bed thickness : 4 to 5 mm
- Coverage : 2 to 2.5 Sq. Feet/1 Kg
- Application : Use notched trowel
- Setting time : 14 to 16 Hours
- Temp : 25° c to 100° c
- Safety : Protect from damp

Packing : 20 kg bag

Self Life : Factory sealed bag of this product are guaranteed to be of first quality for Nine (9) Months* if stored off the ground in a dry area.





Lion Purple Adhesive

Description : Highly polymer modified pre packed special tile adhesive for Internal & External wall cladding Adhesive. Purple Adhesive is a non shrink, high bonding, SHELF curing and high flexible adhesive having excellent waterproofing properties. It is specially made for Ceramic Tiles, Vitrified Tiles flooring. It is both for exterior and interior applications.

Advantage

: Ready to use high bonding and durable. Ideal for fixing tiles on tiles and tiles on wall. Suitable for indoor and out door. Excellent waterproofing characteristics. No need for hacking or mechanical key on surface. Ideal adhesive for wall, floor, showers area, dry and wet areas, swimming pool etc.

Technical

Base	: Polymer Modified cementitious	
Colour	: Gray	
Maxing Ratio	: 1:3 or 1:3.5	
Bed Thickness	: 3 to 4 mm	
Coverage	: 35 to 40 Sq. Feet / 20 kg	
Application	: Use notched trowel	
Best Suitable With	: Lion Admixture Power	
Setting Time	: 10 to 14 Hours	
Temp	: 25o to 100o c	
Safety	: Protect from damp	
Type	: C2 TE ISO 9001-2015	
Strength	: Tensile Strength (N / mm ²)	Compressive Strength (MPA)
28 Days	5.1 KN	33.7 MPA

Packing

: 20kg BOPP Export quality bag.

Shelf Life

: Factory sealed bag of this product are guaranteed to be of first quality for Nine (9) Months* if stored off the ground in a dry area.



Lion Premium Tile Adhesive



Description : Lion Premium Tile Adhesive is a Cementitious ready-mix powder which is thin bed and highly tensile polymer modified product. It's unique properties make it ideal for fixing ceramic / vitrified tiles / mosaic tiles / natural stone like granite, marble etc. To most building substrates.

Areas of Applications : Lion Premium Tile Adhesive mortar is a masonry mortar for use to fix Tiles on Floor, wall, ceiling.

Features & Benefits : Preparation is simple, just add water Although cement based, requires no Curing. This product is self curing It can be used in damp areas. Excellent Tensile adhesion strength . Grouting is possible on the same day. Polymer modified formulation enhance its durability. Being ready to use, the product saves considerable time and labour. Non-hazardous

Method Applications : Easy to mix and use dry mortar saves Water, Sand, Cement & Time. Mix the product with water in the ratio of approximately 1 : 4. Mixing can be done manually or by stirrer . Mixing to be done till homogenous mix is obtained . The Paste should be kept away from direct sunlight, heat and used within 2 hours of preparation (after mixing with water)

Application Mixing : Just add 22% - 25% water in 20kg bag.

Packing : 20kg in BOPP Export Quality Bag.

Technical	Base	: Polymer Modified cementitious	
	Colour	: Gray	
	Maxing Ratio	: 1:3 or 1:3.5	
	Bed Thickness	: 3 to 4 mm	
	Coverage	: 35 to 40 Sq. Feet / 20 kg	
	Application	: Use notched trowel	
	Best Suitable With	: Lion Admixture Power	
	Setting Time	: 10 to 14 Hours	
	Temp	: 25° c to 100° c	
	Safety	: Protect from damp	
	Type	: C2 TE ISO 9001-2015	
	Strength	: Tensile Strength (N / mm ²)	Compressive Strength (MPA)
	28 Days	9.7 KN	45.2 MPA

Shelf Life : Factory sealed bag of this product are guaranteed to be of first quality for Nine (9) Months* if stored off the ground in a dry area.





Lion High Bond Adhesive

Description : Lion High Bond Adhesive is a Cementations ready-mix powder which is thin bed and a highly tensile polymer modified product. Its unique properties make it ideal for fixing marble/natural stone to most building substrates.

Areas of Applications : Lion high Bond Adhesive mortar is a masonry mortar for use to fix heavy stone, heavy marble on Floor, wall, ceiling, cladding.

Features & Benefits : Preparation is simple, just add water Although cement based, requires no Curing. This product is self curing It can be used in frame/ wall-ceiling border areas. Excellent Tensile adhesion strength . Polymer modified formulation enhance its durability. Being ready to use, the product saves considerable time and labour . Non-hazardous .

Method of Application : Easy to mix and use dry mortar saves Water, Sand, Cement& Time . Mix the product with water in the ratio of approximately 1 :4 Mixing can be done manually or by stirrer . Mixing to be done till homogenous mix is obtained . The Paste should be kept away from direct sunlight, heat and used within 120 minutes of preparation (after mixing with water).

Application Mixing : Just add 20% - 27% water in 20kg bag.

Packing : 20 kg BOPP Export Quality Bag.

Technical :

Base	: Polymer Modified cementitious	
Colour	: Gray	
Maxing Ratio	: 1:3 or 1:3.5	
Bed Thickness	: 3 to 4 mm	
Coverage	: 35 to 40 Sq. Feet / 20 kg	
Application	: Use notched trowel	
Best Suitable With	: Lion Admixture Power	
Setting Time	: 10 to 14 Hours	
Temp	: 25° c to 100° c	
Safety	: Protect from damp	
Type	: C2 TE ISO 9001-2015	
Strength	: Tensile Strength (N / mm ²)	Compressive Strength (MPA)
28 Days	10.0 KN	53.9 MPA

Shelf Life : Factory sealed bag of this product are guaranteed to be of first quality for Nine (9) Months* if stored off the ground in a dry area.





Lion Glass Mosaic Adhesive

Multipurpose Thin Set Adhesive

Description : Lion Glass Mosaic Adhesive is a multipurpose, polymer modified thin set powder offering vast utility including applications on interior floor & wall as well as exterior floor & wall installations. It is a Cementitious thin set powder to be mixed only with water to install various types of tiles & stone on variety of substrates using Lion Glass Mosaic method of installation.

Areas of Applications : Lion Glass Mosaic Adhesive is a multipurpose, polymer modified thin set powder offering vast utility including applications on interior floor & wall as well as exterior floor & wall installations, Swimming Pool.

Features & Benefits : Single component, just add water. High strength, polymer modified.
Economical & Easy to use. Water and shock resistant.

Suitable Substrates : Concrete. Cement Plaster. Cement Backer Board. Concrete Masonry. Cement Mortar Beds. Brick Masonry. Exterior Grade Plywood. Tile and Stone. Cement Terrazzo.

Method Applications : The Glass Mosaic adhesive shall be applied to the surface to be tiled with a notched trowel using a scraping motion to work the adhesive into good contact with the surface to be covered.

Notch trowel with notches approximately 4mm is recommended to get a bed thickness of 1.5-2mm. V-notch of 3mm also can be used to get bed thickness of 1.5mm.

Apply only so much that can be covered with tile within 10-15 min or while the adhesive surface is still tacky.

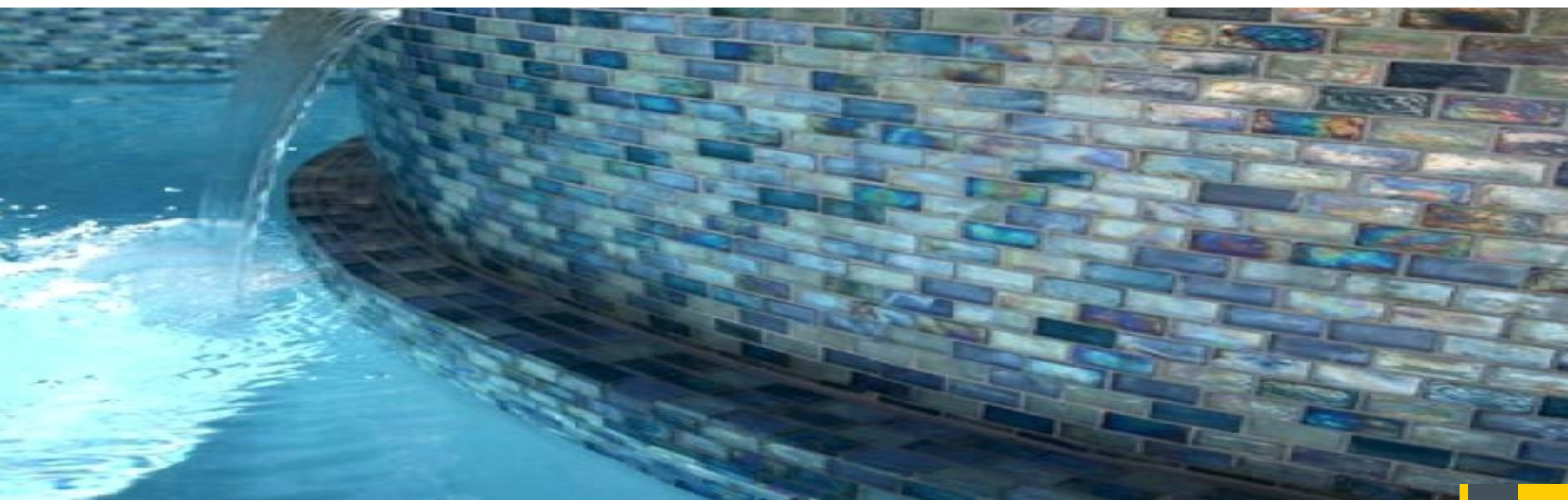
The Glass Mosaic tiles shall then be set in place and beaten gently with mallet or grouting float to insure 100% full bedding.

Tiles shall be aligned to achieve uniform joints and then allowed to set until firm.

The face of the sheets of front mounted glass mosaic tiles shall then be dampened and the face mount paper can be removed.

Excess adhesive must be cleaned from the surface of the tile with a wet cloth or sponge while the adhesive is fresh and has not hardened.

Grouting : Grout installation after a minimum of 24 hours. Curing time at 70° F (21° C).





- Application Mixing & Placing** : Just add 27%-30% water in 20kg bag.
- Packing** : 20kg BOPP Export quality Bag.
- Coverage** : Approx 55-60 sq. ft per 20kg bag with 1/4" x 1/4" (6mm x 6mm) square notched trowel for a bed of 3m m. (Coverage will vary depending on trowel notch size, type and size of tile and substrate.)
- Precaution & Limitation** : During cold weather, protect finished work from traffic until fully cured.
: Contains Portland cement and silica sand. May irritate eyes and skin. Avoid contact with eyes or prolonged contact with skin. In case of contact, flush thoroughly with water.
Do not take internally. Silica sand may cause cancer or serious lung problems. Avoid breathing dust. Wear a respirator in dusty areas. Keep out of reach of children. Not for use directly over particle board, luan, Masonite or hardwood floors.
- Shelf Life** : Factory sealed bag of this product are guaranteed to be of first quality for Nine (9) Months* if stored off the ground in a dry area.





Lion Tile Grout

Description : Cementitious grouts are blend of Portland cement, graded aggregates, fortifiers and colour fast pigments. Suitable for interior and exterior applications. Cementitious grouts are used for porous & absorbent type tiles, non-vitreous clay tiles, marble and glazed wall tiles.

Areas of Applications : Lion Tile Grout are used for porous & absorbent type tiles, non-vitreous clay tiles, marble and glazed wall tiles.

Features & Benefits : Color fast. Weather resistant and easy maintenance. Non-shrinking and non-cracking . Easy to apply and clean. No wet curing required when used with latex.

Method Application : **Step 1 :**
Allow adhesive bed to set 24 hours before grouting commences. Ensure that joints are dry, clean or free of contaminants.

Step 2 :

Lion Colour Grout with clean water as per the recommended mix ratio. Mechanical mixing is recommended to obtain a uniform coloured mortar. Ensure pigments are thoroughly dispersed during mixing.

Step 3 :

Apply grout into joints using a grout float/rubber squeegee. Apply to a small areas at time

Step 4 :

Clean excess or residue grout promptly using a damp cloth or sponge;before it dries out.

Step 5 :

When grout is sufficient firm, polish tile surface with a clean dry cloth to remove grout film / haze. Allow grout to set for 24-48 hours. The Paste should be kept away from direct sunlight, heat and used.

Technical Data : Application Temperature: Above 5°C-50°C. Working time {Pot Life}: 45 minutes. Setting Time: 24





Lion Stone Filler

Description : Lion Stone Filler is a blend of specially selected cements, polypropylene fibers, fillers, high grade pigments and synthetic organic polymers. It is polymer modified and highly water resist, peel proof and crack proof tile joint filler available in more than 36 attractive colours. Suitable for more than 5mm & up to 15mm joint width It complies to BS 5385.

- Surface Treatment :** Surface must be properly clean. away from grease, oil and dust.
Surface Must be sufficient flat to permit the specified flatness of finished tiling.
Not recommended to use on metal, wood, paint and fully glazed backgrounds.
(For any requirement please contact company's technical department.)
- Advantages :** Can be used for filling joints of various kinds of tiles and stones.
Easy to use and consistent in quality. Highly water resistant & peel proof.
Highly stain resistance / Acid proof. High damp resistance. Available in attractive colour range.
- Recommended :** Tile joint must be clean, free from any dust or other contaminates. Fill the joints minimum after 24 hours
- Application** from tile fixed with chemical. Mix joint filler and water in 3: 1 ratio. Wait for ten minutes for proper chemical action. Fill the joint properly. Clean the extra joint filler from tile surface with wet cotton cloth after 1.5 hours. Clean the joints with dry cotton cloth after 24 hours. Add Grout liquid is recommended for high strength & impart bonding, weather resistance & durability.
- NOTE :** Material is produced under strict supervision by using quality materials, the use and application of these products ore made without guarantee since the conditions of their application are beyond its control and this Dalo Sheet version is the latest one. The company may modify it without prior notice.
- Recommended For :** Ideal for all kind of joints in Exterior Walls & Exterior Floors. Pavers Flooring, Parking area, etc. Ideal For Vitrified, Kota, Marble & Granite Flooring.
- Technical Specifications :** Density : Wet : 1.85 kg / liter Dry: 1.78 kg/ltr
Compressive strength : 34.45 N/mm² @ 28 days
Flexural strength : 3.65 N/mm² @28 days
Working time : 30 minutes
Curing : minimum 48 hours
Mixing Ratio : Approx 0.32 to 0.34 % by weight of Stone filler 1.6 to 1.7 liter water per 5 kg stone filler
Colours : As per shade card
- Packing :** Available in 1 kg pouch
- Self Life :** Factory sealed bag of this product are guaranteed to be of first quality for One (1) year* if stored off the ground in a dry area.
*High humidity will reduce the shelf life of bagged product.



Lion Binder

LT 22



Description : Lion Binder is economical on-site mix additive to be mixed with cement, for fixing tiles & Cement Plaster. Lion Binder exhibits very high water retention and thus reduces the absorption of water in to porous substrates. It provides workability, sufficient sag resistance as well as appropriate setting time. The adjustability is good even at low dosages and high ambient temperatures It makes cement All most cured.

Feature : Improves adhesion. Good adjustability time with high water retention even at elevated temperature. High open time & anti sag properties. Excellent waterproofing properties. Suitable for Ceramic, Vitrified tiles, Granite, Heavy Stone etc. Suitable for Cement plaster. It can be used with both grey and white cement.

Recommended : The surface should be clean, and free from dirt, oil or grease before application of conventional cement

Application Machan or leveling bed.
Ideally leveling bed / Machan should be prepared using Cement: Sand: Water in the ratio of 1 : 6 : 1.
Easy to work for various application.

Technical Information : Colour : White
Appearance : Free flowing Powder
Mixing ratio. : 1 :3 or 1 :3 .5
Bulk Density : 075 g / ml
Shear Adhesion Strength (KN)
(A) Dry Condition
At 24 hrs under normal lab Condition. Minimum 2.5 kn
At 14 days under normal lab Condition. Minimum 8.0 kn
(B) Heat Ageing Condition at 14 days Minimum 4.0 kn
(C) Wet condition at 14 days Minimum 4.0 kn

Mixing Ratio : 50 kg cement 300 gm Lion binder

Packing : 300 gm

Self Life : Factory sealed bag of this product are guaranteed to be of first quality for One (1) year* if stored off the ground in a dry area.





Lion Grout Admix Power A1

Description : Lion Admixture is an acrylic co-polymer emulsion that has been specifically formulated for the addition to Tile Grout. The grout admixture will significantly improve the bond strength; provide higher density resistance to thermal shock and flexibility of grout. Because of its acrylic base, this liquid can enhance a grout's appearance through better colour retention and less fading caused by ultraviolet rays.

Advantages : Reduces staining.
It is excellent for grouting tiles with high absorptive levels, 7% or better.
Increases weather resistance for grout.
Increases durability & high bonding.
Increases flexibility.

Mixing : Pour 250 ml of Lion Admixture with 200 ml of clean water into a clean container. Add the Tile Grout powder slowly continuously mixing until a smooth. Paste consistency is achieved. Allow to stand for 2 minutes. Re-stir. The product is now ready to use You can also use Lion add Mixture as a total water replacement in the grout.

Recommended For : Tile Grout (White or Coloured grout).
Tile Grout (White or Coloured grout).
Any Non - Shrink Adhesives (ETA/ GMA) & Mortar.

Technical Specifications : Colour : White liquid.
Base : Styrene Butadiene Rubber.
Bond Strength : With Water. 2.60 N/mm² (28 days).
Compressive strength : With Water : 24.10 N/mm² (28 days)
Coverage : 250 ml / 1 kg Tile Grout
Storage : One year, if kept in dry sealed container.
Safety : Avoid contact with eyes or skin. In case of eye contact, wash with water and incose of skin contact call physician immediately.

Packing : Available in 100 and 250 ml

Shelf Life : Factory sealed bag of this product are guaranteed to be of first quality for Two (2) year* if stored off the ground in a dry area.





Lion L-poxy Epoxy

Description : Epoxy Grout is a three-part system, comprising of Part A, Part B and Part C. For ease of application and the ability to fill tile/stone joints the grout is best mixed to a smooth, creamy consistency. Epoxy Grout is Hygienic, hard-wearing, impervious, epoxied resin-based grout with a high degree of resistance to chemical attack, abrasion and impact. The cured grout does not transfer taints to foodstuffs, does not permit the entry of bacteria or dirt and is easily maintained in a sterile condition.

Areas of Applications : The L-Poxy Epoxy Grout is intended for jointing wall and floor tiles, particularly on surfaces with high chemical and sets and hardens without contracting.

Features & Benefits : Sterile. • Frost -Proof. • Hygienic and chemical resistant. • Stain and bacterial resistant. • High Durable joints. • Water Proof. • Smooth Surface. • High strength. • Non - Contracting. • High abrasion resistant.

Method Applications : Joints should be free from efflorescence, latence, dirt and other loose material. Remove thoroughly by dry brushing . Clean: All joints should be cleaned down by washing with water containing detergent, then with clean water. Ensure the joints are dry before grouting. Before commencing grouting the adhesive bed must be set. It is essential that the tiles used are appropriate for the service conditions and are fixed in a solid bed of adhesive i.e. ensuring that, as far as possible, no voids are left behind/ beneath the tiles. Refer to the relevant product datasheet for setting/ drying times. Protect open joints from contamination and ensure that they are clean, dry and free from loose debris prior to grouting. Do not grout at temperatures less than 5C or in damp conditions.

Area of Applications : Wall. • Exterior. • Work Tops. • Hygienic sterile Areas. • Chemical Resistance. • Hydrotherapy Pools. • Floors. • Dry Areas. • Swimming pools. • Interior. • Wet Areas. • Heavily trafficked Floors.

Application Mixing : The Epoxy Grout Consistency can be adjusted to suit the application and site conditions by varying the quantity of Part C added to the mixed Part A and Part B. Before use shake the bottle of Part B and Stir Part A. Add all of Part B to All of Part A in a suitable, clean Container And thoroughly mix together. If an electric drill mixer is used, blend at slow speed (less than 300 rpm). Slowly add the required amount of Part C and mix until all the Part C has been dispersed and a uniform colour is achieved. Immediately pour the mixed grout onto the working area. The mixed Epoxy Grout is usable for up to 45 minutes at 27±1C.

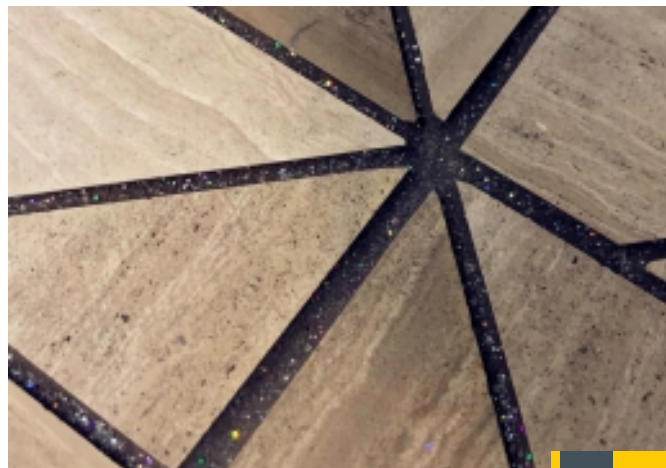
Coverage Estimates : **Pack Size 5 Kg :** Part (A) 450 gm, Part (B) 900 gm and part (C) 3.650 gm.

Pack Size 1 Kg : Part (A) 90 gm, Part (B) 180gm and part (C) 730 gm.

Coverage Consumption depend on joint width size of tiles and good workmanship.

Precaution & Limitation : Keep out of reach of children .Wear suitable protective clothing, gloves and eyes/face protection. In case of contact with eyes rinse immediately with plenty of clean water and seek medical advice.

Shelf Life : Factory sealed bag of this product are guaranteed to be of first quality for Two (2) year* if stored off the ground in a dry area.

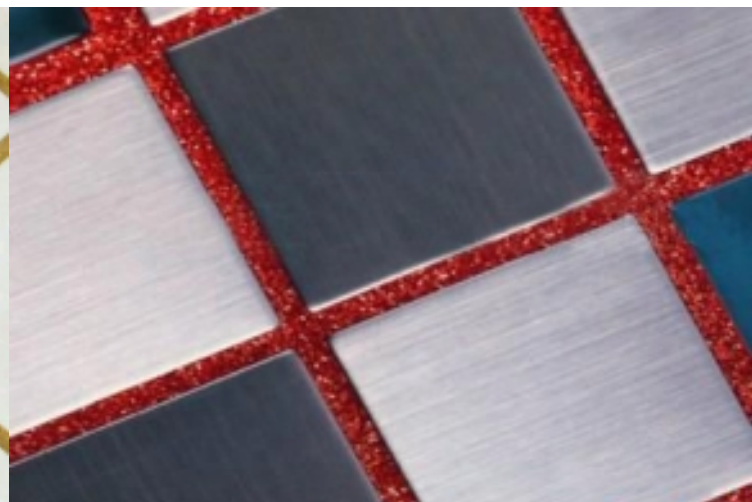




Lion Sparkle L-Poxy Epoxy

Description : Lion Sparkle L-poxy Epoxy in unique system of three components, water wipable, high bonding and high strength, tough, 100% epoxy joint filler. It is Dirt free, stain free, Water proof, Fungal & Bacteria proof, Acid & Chemical resistant ultimate durable epoxy Joint filler. Elegant & Glorious range. Smoothest surface, attractive colour shades, easy availability and application support Resist heavy load and saves edges of the tile, highly compatible with total range of floor and wall floorings.

- Recommended Application :** Mix hardener with resin in proportion of 1 : 2. Add filler (powder) in appropriate quantity (Approx. 600 to 700 gm) Mix the component till it becomes a workable paste form Apply the paste between tile joints Clean the joints with the help of scrubber (scrub bar) Further clean the side of joints with sponge Finally clean the joints with wet cloth at lost apply wet finger on joint for glossy finish.)
- Advantages :**
- Very to apply & clean.
 - Smoothest surface which do not allows to any dust or fungus.
 - Ultra high bonding and durability.
 - 100% Dirt free tile joints.
 - Fungal & Bacterial proof Waterproof.
 - Highly Chemical & Acid resistant Improved color stability.
 - Uniform in shade.
- Resistance :**
- | | | | |
|-----------------|-------------|------------------|-------------|
| Oxalic Acid | : up to 10% | Acetic Acid | : up to 5% |
| Phosphoric Acid | : up to 50% | Sulphuric Acid | : up to 2% |
| Lactic Acid | : up to 5% | Sodium Hydroxide | : up to 50% |
- Application For :** Kitchen, Swimming Pool, Floors & Walls, Food Industries, Pharmaceutical Units, Beverages, Bathrooms/Water Bodies, Hospitals / Laboratories, Restaurants, Automobile Hub.
- Technical Specifications :**
- | | | | |
|------------------|---------------------------|----------------------|-------------------|
| Water absorption | : 0.3% | Initial Setting time | : 4hrs |
| Comp strength | : 65 N / mm ² | Linear shrinkage | : > 0.11% |
| Tensile Strength | : 13 N / mm ² | Final Setting | : 72 Hours |
| Bond Strength | : 8.8 N / mm ² | Pot Life | : 40 to 45 minute |
- Packing :** 1 kg and 5 kg Bucket
- Self Life :** Factory sealed bag of this product are guaranteed to be of first quality for One (1) year* if stored off the ground in a dry area.





Lion Long Lastic

(PU Adhesive)

Description : Lion Long Lastic is a high shear and tensile improved PU based cladding adhesive to use on any construction material to fix any tile on any surface. It is recommended for various kinds of natural stone i.e. marble, granite, slate etc. and total range of tiles. Lion Long Lastic has property of no vertical slip due to high tensile and shear strength so can be recommended for interior and exterior cladding and flooring.

Advantages : High flexibility., Accommodate vibrations and shock., High bond and Non-staining., High chemical resistance., Water and UV resistance., Permanent bond., Any tile on any surface

Recommended For : Natural stone i.e. Granite, Marble, Kota, Slate
Ceramic and vitrified
Porcelain and design tile
Glass bricks and glass mosaics
Quartz and handmade tile
Composite marble and artificial tile
Wall and floor
Interior and exterior
Wood, metal, glass any surface without oil/greas

Preparation : Lion Long Lastic is prepared by mixing together part A and B from downwards to upwards, using a low -rev (=100/min.) helicoidal agitator, respecting the present of 2: 1 of the packs. Pour part B into the bucket containing Part A, be careful by while mixing two parts uniformly until a smooth and even coloured mixture is obtained. Surface where, tile is to be fixed -must be dry, in line and level and well cured.

Colour : White

Pot Life : @1 hour, open time : 1 hour.

Coverage : 1kg = 5-7 sq. ft.

Grouting : 12 hour walls / = 24 hours floors mixing part A : Part B = 2:1

Apply Between : +10^oc to 50^oc with suitable notches trowel

Packing : 1kg / 5 kg bucket





Lion Tile Cleaner

Description : This chemical is a pale, aqueous, viscous, nonionic detergent formulation containing no acids, alkalies or salt. It is concentrated neutral in pH based floor stain resistant cleaner

- Features**
- : Regular cleaning of surface.
 - Gives high degree of stain resistance.
 - Retains glossiness of surface.
 - Imports dust repelling property.
 - Imports slip resistance property.
 - Imparts antistatic property.
 - Also used for regular cleaning of oil & for removing the dust after a long term duration.
- Application**
- : This cleaner cum stain resistant may be used on any surface in horizontal / vertical manner i.e. ceramic tiles/ marble / natural or artificial stone/ quartz stone etc.
 - Use 200 ml of Tile Cleaner for every 1 liter water and apply on the floor once or twice a month for better stain resistant property.
 - Use 200 ml of Tile Cleaner for 1 ltr. water in a bucket for every day cleaning.
- Storage**
- : Store in cool and dry place in sealed condition and prevent from direct sunlight.
- Safety Precautions**
- : Avoid contact with skin & eyes. In case of skin contact, rinse with clean water and then clean with soap water. In case of eye contact, rinse immediately with clean water and seek medical advise.
- Packing**
- : 1 Ltr.
- Self Life**
- : Factory sealed bag of this product are guaranteed to be of first quality for Two (2) year* if stored off the ground in a dry area.





Lion Jointer

Description : Lion Jointing Mortar is a thin bed, high strength, pre-mixed, quality assured mortar compressing of Ordinary Portland Cement, Specially Silica Sand and Polymers. It is specially German formulated and easily applied, giving a better bonding with higher air entering properties. Lion Jointing mortar is a masonry mortar for use in laying various types of fly ash/concrete bricks, AAC block, Concrete block and stones. It replace conventional Jointing Mortar of 12-18mm thickness with highly versatile 3-5 mm thickness mortar.

Areas of Applications : Lion Jointing mortar is a masonry mortar for use in laying various types of fly ash/concrete bricks, AAC block, Concrete block and stones.

Features & Benefits : Uniform quality and strength due to quality control and produce under strict supervision in factory. Easy to handle, mix, transportation save lot of energy which is required in conventional method / system. Available in convenient packing of 40 kg which are easy for company self transportation, handling & use. No special / skill person required for joining of AAC blocks, Concrete block masonry. Wall join with Lion Jointer can be plaster or paint earlier compare to wall join with conventional mortar. Wall in which Lion Jointer has been used gets more strength in lesser time as compare to other materials. Skip the activities of supervision & monitoring the quality of mortar at site.

Method Application : Easy to mix and use dry mortar saves Water, Sand, Cement & Time . Joint thickness minimum 3/5 mm against 12 mm to 18 mm in other material. No curing required to the joints after installation in AAC Block Masonry against other conventional Cement. No wastage during use against conventional cement mortar .

Product Report :

1	Appearance	Free flowing powder
2	Colour	Grey
3	Water Demand	25% to 27 %
4	Workability	Good
5	Thickness	3-5 mm
6	Hard Dry	24 Hrs
7	Pot Life	Approximately 2 Hrs
8	Self Curing	No Additional Water is Required
9	Tensile Adhesion Strength (N/mm ²) Concrete	After 28 d SC 1.05
10	Tensile Adhesion Strength (N/mm ²) AAC Block	After 28 d SC 8.
11	Abrasion (mm ³)	424.5
12	Water Absorption by Karsten Tube after 24hrs on Concrete Block	> 4.0 ml
13	Coverage	Approximately 120 sq. ft/40kg bag at 3-5mm thickness

Application Mixing : Just add 27%-30% water in 40kg Lion Block Jointing bag .

Packing : 40 kg BOPP Export Quality Bag.

Precaution & Limitation : During cold weather, protect finished work from use until fully cured. Contains Portland cement and silica sand. May irritate eyes and skin. Avoid contact with eyes or prolonged contact with skin. In case of contact, flush thoroughly with water. Do not take internally. Silica sand may cause cancer or serious lung problems. Avoid breathing dust. Wear a respirator in dusty areas. Keep out of reach of children.



Lion Plastering



Description : It is a premixed ready to use cement based mortar for external as well as internal plaster which ensures quality consistency. It is a mixture of graded inert fillers, additives and binder, has excellent impermeability characteristics, increases plastic life of mortar and reduces drying shrinkage cracks. It is free from corrosion inducing substances and can be used with plastering machines.

Areas of Applications : It is a premixed ready to use cement based mortar for external as well as internal plaster which ensures quality consistency.

Features & Benefits : Uniform quality and strength due to quality control and produce under strict supervision in factory. Easy to handle, mix, transportation save lot of energy which is required in conventional method I system. Available in convenient packing of 40 kg which are easy for company self transportation, handling & use. Wall Plaster with Lion Plastering can be paint earlier compare to wall Plaster with conventional mortar. Wall in which Lion Plastering has been used gets more strength in lesser time & lesser curing as compare to other materials. Skip the activities of supervision & monitoring the quality of mortar at site. Labour cost can be reduce . Preparation is simple, just add water . Mix the product with water in the ratio of approximately 1 :4 . Mixing can be done manually or by stirrer .

Method Application : Easy to mix and use d ry mortar saves Water, Sand, Cement & Time . Joint thickness minimum 8/12 mm against 15 mm to 25 mm in other material. No wastage during use against conventional cement mortar

Product Report :

Properties	Specification
Appearance	Greyish granular Powder
Binder	Ordinary Portland Cement (OPC)
Aggregate	0.5-3 mm Silica Sand Standard
Additives	Water soluble Additives to improve workability, Adhesion & Durability.
Bulk Density	1.4-1.6
Compressive strength	>18.45Nmm ² @28Days
Coverage	0.16-0.20 kg / sq. ft. / mm
Coat Thickness	8-12 mm
Pot Life	2 hrs
Water Demand	16% to 20 % by Weight
Compatibility	Any Good Quality Putty and Paint can be applied subsequently over Lion Plaster.

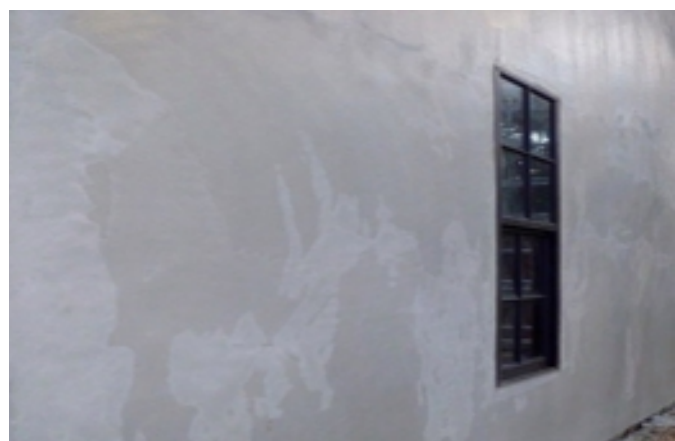
Packing : 40kg BOPP Export quality bag.

Application Mixing : Just add 22%-25% water in 40kg Lion Plastering bag.

Coverage : Coverage of Lion Plastering is 18-20 sq ft./40kg bag.

Precaution & Limitation : During hot weather, cure the surface with light spraying of water. Contains Portland cement. May irritate eyes and skin. Avoid contact with eyes or prolonged contact with skin. In case of contact, flush thoroughly with water. Do not take internally. Avoid breathing dust. Wear a respirator in dusty areas. Keep out of reach of children.

Self Life : Factory sealed bag of this product are guaranteed to be of first quality for One (1) year* if stored off the ground in a dry area.





Lion LP 2

Description : Lion Super Grout LP 2 is supplied as a ready to use dry powder. The addition of a controlled amount of clean water produces a free flowing, non-shrink grout for gap thicknesses up to 100mm Lion Super Grout LP 2 is a blend of Portland cement, graded fillers and chemical additives which impart controlled expansion in the plastic state whilst minimizing water demand. The low water demand ensures high early strength. The graded fillers are designed to assist uniform mixing and produce a consistent grout.

Areas of Applications : Lion Super Grout LP 2 is used for precision grouting where it is essential to withstand static and dynamic loads. Typical applications would be the grouting of base plates of turbines, compressors, boiler feed pumps, bold casting etc., it can also be used for anchoring a wide range of fixings. These include masts, anchor bolts and fence posts.

Future & Benefit : Gaseous expansion system compensates for shrinkage and settlement in the plastic state No metallic iron content to cause staining Pre-packed material overcomes onsite batching variations Develops high early strength without the use of chlorides High ultimate strength ensure the durability of the hardened grout Free flow ensures high level of contact with load bearing area

Method Application : **Preparation :**

Foundation surface : The substrate surface must be free from oil, grease or any loosely adherent material. If the concrete surface is defective or has laitance, it must be cut back to a sound base. Bolt holes and fixing pockets must be blown clean of any dirt or debris.

Pre-soaking : Several hours prior to placing, the concrete substrates should be saturated with fresh water. Immediately before grouting takes place any free water. should be removed with particular care being taken to blow out all bolt holes and pockets.

Base plate : It is essential that this is clean and free from oil, grease or scale. Air pressure relief holes should be provided to allow venting of any isolated high spots.

Leveling shims : If these are to be removed after the grout has hardened, they should be treated with a thin layer of grease.

Form work : The form work should be constructed to be leak-proof. This can be achieved by using foam rubber strip or mastic sealant beneath the constructed form work and between joints. In some cases it is practical to use a sacrificial semi-dry sand and cement form work. The form work should include outlets for pre-soaking.

Unrestrained surface area : This must be kept to a minimum. Generally the gap width between the perimeter form work and the plate edge should not exceed 150mm on the pouring side and 50mm on the opposite side. It is advisable, where practical, to have no gap at the flank sides





- Application Mixing & Placing** : **Mixing** : For best results a mechanically powered grout mixer should be used. When quantities up to 40kg are used, a heavy duty slow speed drill (400-500 rpm) fitted with a paddle is suitable. Larger quantities will require a heavy duty mixer.
- To enable the grouting operation to be carried out continuously, it is essential that sufficient mixing capacity and labour are available. The use of a grout holding tank with provision to gently agitate the grout may be required.
- The quantity of clean water required to be added to a 40kg bag
- The selected water content should be accurately measured into the mixer. The total content of the Lion Super Grout LP 2 bag should be slowly added and continuous mixing should take place for 5 minutes. This will ensure that the grout has a smooth even consistency.
- PLACING** : At 300 C place the grout within 20 minutes of mixing to gain full benefit of the expansion process.
- Lion Super Grout LP 2 can be placed in thicknesses up to 100mm in a single pour when used as an under plate grout.
- For thicker sections it is necessary to fill out Lion Super Grout LP 2 with well graded silt free aggregate to minimize heat build up. Typically a 10mm aggregate is suitable. 50 -100% aggregate weight of Lion Super Grout LP 2 can be added.
- Any bolt pockets must be grouted prior to grouting between the substrate and the base plate.
- Continuous grout flow is essential. Sufficient grout must be prepared before starting. The time taken to pour a batch must be regulated to the time to prepare the next one.
- Packing** : 40kg in BOPP Export Quality Bag.
- Precaution & Limitation** : Lion Super Grout LP2 is alkaline and should not come into contact with skin and eyes. Inhalation of dust during mixing should be avoided.
- Gloves, goggles and dust mask should be worn.
- If contact with skin occurs, it shall be washed with water. Splashes to eyes should be washed immediately with plenty of clean water and medical advice sought.
- Lion Super Grout LP2 is non-flammable.
- Shelf Life** : Factory sealed bag of this product are guaranteed to be of first quality for one year* if stored off the ground in a dry area.
- * High humidity will reduce the shelf life of bagged product.





Lion Floor Hardener

Description : Lion Floor Hardener is specially made with special wearing aggregates having high abrasion and wear resistance of suitable shape and size. Lion Floor Hardener improves the abrasion resistance of concrete by 150%. Compressive strength of Lion Floor Hardener 45 N / MM², light reflection is 30% more.

Recommended Applications : Lion Floor Hardener is applied in two stages. Lion Floor Hardener is evenly broadcast on the surface of the Concrete when the material becomes uniformly dark by absorption of moisture from the concrete then this first application can be floated. After floating, immediately Lion Floor Hardener is thrown evenly over the surface. Again moisture is absorbed and the surface can be floated in the same way as done before. Final finishing of the floor using blades of power float can be carried out when the floor has stiffened sufficiently.

Advantages : Provides a dense and non porous surface.
Forms monolithic bond with base concrete.
Resistance to Oil and grease.
Provides high abrasion and wear resistance hard surface.
Dust proof non slippery surface.
Lion Floor Hardener improves the abrasion resistance of concrete by 50%. Compressive strength of Lion Floor Hardener 45 N / MM², light reflection is 30% more.

Recommended for : Flooring of breweries, food processing Plants, dairies, power stations, chemical refineries, metal plating, air craft hangers, laboratories etc. Industrial areas subjected to heaviest traffic like loading bays, trucking lanes, workshops, machine shops, ramps and spillways etc.

Technical Data :

Form	: Powder
Base	: Cementitious
Bulk Density	: 2100kg/m ³
Chloride contents	: Nil
Colour	: Grey, Brick red, Green, Yellow
Light Traffic	: 3.0 kg/sq.m
Medium traffic	: 5.0 kg/sq. m
Heavy Traffic	: 7.0kg/sq. m
Safety	: non toxic, non flammable.

Packing : 25 kg BOPP Bag.
Shelf Life : Factory sealed bag of this product are guaranteed to be of first quality for Two (2) year* if stored off the ground in a dry area.
* High humidity will reduce the shelf life of bagged product.





Lion King White cement

Polymer based white Cement compound

Description : King White Cement Polymer Modified Decorative White Cement has long been a product shrouded in mystery and myths about its applications and uses. Very often people have the notion that since it is a “Cement” product, it must be used purely for construction and repair purposes. Polymer bag is the most popular and time tested choice for your floors and walls but also its lesser known application have unimaginable scope. It is suitable for numerous decorative & architectural application in white, light & dark colours.

Recommended : **1. Designer Flooring :** You can put your personal touch on almost any part of your house, be it interiors or exteriors, using King White Cement Polymer Modified Decorative White Cement. as your magic tool. So go on and be amazed. Envisioning your dream home has never been so easy! Enter the world limitless possibilities with platinum decorative white cement.

2. Marble Flooring : Though marble stone is naturally white and elegant, it's also translucent and porous in nature. If marble is laid on a grey cement base, it starts to look dull and grey, losing its aesthetic charm. An effective way to prevent this is to lay it on a thin layer of King White Cement Polymers Modified Decorative White Cement. in the form of slurry. This acts as a white separator reflecting 100 % light preventing the grey cement from penetrating through and running the look of your marble.

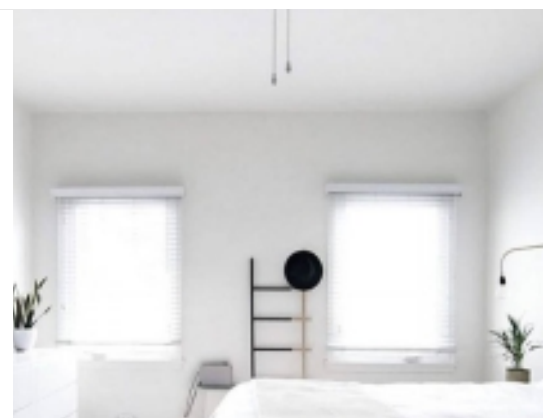
3. Terrazzo Flooring : The craft of in situ terrazzo has made a comeback due to its durability, beauty and low cost. In situ terrazzo is prepared on site creating an almost seamless floor finish that is second to none in terms of quality and maintenance. There are no grout joints to clean, just a completely flat surface. It is popular for residential & office buildings. It is premium flooring for a cost less than that of some imported marbles and granites. Other benefits of terrazzo flooring laid by using King White Cement Polymer Modified Decorative White Cement are the endless color schemes, design & pattern flexibility that can be made to achieve exactly the effect you desire.

4. Architectural Uses : Stretch your imagination beyond just wall and floor finishes with King White Cement Polymers Modified Decorative White Cement. There are many recent innovations that have been made with King White Cement Polymers Modified Decorative White Cement Some of them include the use of grass reinforced concrete and pre-cast panels which have revolutionized the modern construction and design world. Other aesthetic and creative applications include the use of King White Cement Polymers Modified Decorative White Cement in making any landscaping or ornamental article imaginable. Read on, and be amazed.

5. Ornamental Uses : You can now express your creativity by making any landscaping or ornamental article with platinum decorative white cement that you can imagine. King White Cement Polymers Modified Decorative White Cement has notable applications in the molding of sculptures, motifs, water fountains, benches etc. If you can dream it, it can be made, with King White Cement Polymers Modified Decorative White Cement.

Packing : 1 kg, 5 kg, 20 kg, 50 kg .

Shelf Life : 6 Months.





Lion Wall Touch

(Wall Putty)

Description : Lion Wall Touch (Wall Putty) is a White cement based polymer modified wall putty specially developed as a finish coat to cover unevenness and pinholes in plastered surfaces and to make the walls/ceilings ready for painting. As it is white, it can be treated as a base coat for painting.

Areas of Applications : Lion wall Touch specially developed as a finish coat to cover unevenness and pinholes in plastered surfaces and to make the walls/ceilings ready for painting.

Features & Benefits : Excellent Whitest putty. Highly water resistant. Strong bonding to the base plaster. Excellent Smooth finish. Excellent workability. UV Resistance. True color tone of the paint is maintained, primer is not required. Protects expensive paint from dampness, peeling off and flaking. Makes paint durable. Paint finish is superior. Suitable for interior as well as exterior. Reduces paint consumption. Avoid frequent repainting. Cost-effective. Aesthetic look for ceilings, interior and external walls. Ease of use at site

Method Applications : Dampen the surface to be plastered with clean water. Allow excess water to drain off. Using a steel trowel/blade, apply the above mix to a thickness of about 0.5-1 mm level and smoothen the surface. Apply the second coat 0.5-1 mm after the first coat has fully dried and set. In areas of high temperature & low humidity for two days is recommended. The thickness of each coat should not exceed 1 mm and total plaster thickness should not exceed 2mm. Smoothen with a steel trowel, Sand paper if so desired with 600no. of sand paper

Test Result of Lion Wall Touch : Pot life 115 minutes. Whiteness 95 % +. Autoclave expansion Nil. Work ability good .

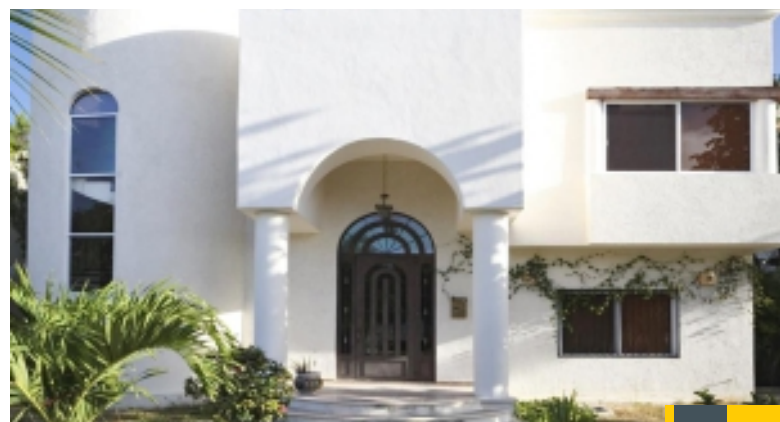
Application Mixing : Take 300-400 ml of clean water for 1 kg of LION WALL TOUCH (wall putty) in a clean bucket. It is very important that Lion Wall Touch to be Added in water and not vice versa. Stir continuously by using an electric mixer or by hand to obtain a homogeneous lump- free paste. Allow the resultant paste to stand for about 10 minutes for the additives to dissolve. Re-mix again for about 2 minutes. The mixture is now ready. Use the mix within 1 Hrs

Packing : 5 kg, 20kg, 40kg BOPP Export quality bag.

Coverage : ● Maximum two layers of Lion Wall Touch. ● Minimum thickness of 1st Layer 0.5 to 1 mm. ● Maximum thickness of 2nd Layer 0.5 to 1 mm. ● Total thickness can go up to 1 to 2 mm in 2 Layers.

Precaution & Limitation : Although Lion Wall Touch do not contain any toxic material, use rubber gloves while mixing. Precaution should be taken to avoid dust inhalation while handling putty powder or during removal of application marks with fine emery paper-say wearing nose mask. Keep the product out of reach of children. Once putty paste has hardened, it shall not be used by adding water.

Shelf Life : Factory sealed bag of this product are guaranteed to be of first quality for Six (6) Month* if stored off the ground in a dry area. * High humidity will reduce the shelf life of bagged product.



Lion Precast Hardener

(Chloride / Melamine / SNF / PCE)



Description : Chloride based plasticizer for accelerating the setting time of plain cement concrete for early development of strength. Lion Hardener should be directly added to the mix preferably with the mixing water. The optimum dosage rate should be determined by site trials.

Areas of Applications : Concrete Block, RCC Pipe, Every Pre-cast plant.

Future & Benefit : Increases the rate of strength development. Increases density . Accelerates the hardening of floors and screeds. Accelerates the setting time of concrete. Resistant to freezing in cold weather concreting. Can be used for P.C.C. work and paver block making . Ideal for hollow blocks and concrete bricks. Allows continue placing of concrete at low temperature .

Properties : Physical State : Clear Liquid

Compatibility : Lion Hardener is compatible with ordinary & Portland Cement but not high alumina or sulphate resisting cement.

Air Entrainment : Less than 1 % additional air compatibility with other cement.

Packing : 250 kg Drum.

Application Mixing : Use 300-400ml per 50kg of cement.

Precaution & Limitation : It may irritate eyes and skin. Avoid contact with eyes or prolonged contact with skin. In case of contact, flush thoroughly with water. Do not take internally. It may cause cancer or serious lung problems . Keep out of reach of children .

Shelf Life : Best before one years from the date manufacture when in sealed pack and stored under proper condition. Store in a cool &dry place in unopened condition away from direct sunlight.





Lion Eco Tex (Texture Plaster)

- Description** : A single pack, water based coating, based on durable acrylic copolymers and quartz aggregates in aqueous dispersion.
- Intended Uses** : Used as a structured decorative coating system for exterior building walls/facades. The thickness of the coating is governed by grade (size) of the quartz aggregates in the plaster. Immediately thereafter the pattern is etched using a plastic trowel. The aggregates provide hardness, resistance to wear and allow the wall to breathe. This product is available in course, medium & fine texture.
- Characteristics** : Used as a high-build, decorative coating, applied thickly in a single coat. The style of etching is unique to the job on which it is being applied and provides a very attractive 3D texture, which changes with the direction of the sun & light. The Textured Plaster is resistant to weathering, extreme temperature variations and UV light degeneration. Excellent adhesion to suitability prepared and primed surfaces. Suitable for use on concrete, cement plaster, gypsum board, chipboard, Masonite, Herculite ceilings, wood, fibre-cement and similar materials. Provides a hard surface which is usable after 24 hours. The plasters are washable and retain their elasticity for many years. The plasters will effectively hide plaster cracks.





Lion Prime Coat

**Efflorescence Resistant Penetrating
Cum Waterproof Primer**

Product Specification : Lion Prime Coat is a water based primer composed of acrylic polymer, it is used as a primer over exterior & interior building walls as well as roofs, slopes before application or various exterior and interior water based coatings.

Features :

- Good binding of chalky or porous substrates and over coating.
- Water based with good impermeability.
- Used as a primer on internal and external surfaces.
- Suitable for high alkaline substrates.
- Provides deep penetration thus imparts excellent substrate adhesion.
- Provides excellent efflorescence resistance due to its chemical.

Application :

- Terraces rooftops of building-cementitious, asbestos, brick false and ceiling, concrete surface, etc. Exterior of buildings & plastered walls.

Application Guidelines :

Surface Preparation :

- The surface should be clean from any loose growth dust particles or grease or any old flaking paints. Any growth of fungus or algae has to be removed by wire brush followed by water cleaning.
- All surface crack more cracks up to 5mm width should be filled with crack seal.
- Crack More than 5 mm and all separation gaps should be filled up with Lion Premium SBR Latex modified mortar or as specified.
- Recommended application system Dilute Lion Premium Coat with in proportion of 2 : 1 and stir well until a uniform consistency in achieved. Apply a single coat of Lion Premium Coat & allow it to dry for 3 to 4 hrs. Before commencing to further finish coats.

Coverage :

- 45 to 50 sq. Feet in two coats. (Coverage may vary depending upon the texture and porosity of the surface.)

Packing : 1 kg, 4 kg, 10 kg, 20 kg

Method : By brush, roller & spray.

Technical Specification :

Nature : Single component

Appearance : White

Tensile Strength, N/mm² : >2.0

Bonding strength : Excellent to porous substrates.

Density @25⁰c.g/cc : 1.3

Weathering resistance : Excellent

Efflorescence resistance : No efflorescence in paint film

Shelf Life & Storage :

- Shelf life is 12 months from the date of manufacturing.
- Store in shed, protecting from direct sunlight and away from extreme temperature.
- In extremely hot temperature condition, store in a temperature controlled environment (i.e. Less than 30⁰c)



Lion Tuff Create

High Performance Acrylic Elastomeric
Exterior Waterproofing Coating



Product Specification : Lion Tuff Create is composed of high quality acrylic elastomeric exterior waterproofing coating. It is used as a flexibility waterproofing and protective coating for exterior walls of the building because it forms excellent film thickness, good flexibility, breathing properties, water resistance, crack-bridging ability, weathering durability and an excellent to the growth of microorganisms.

Features : • Flexible and covers hairline crack. • Water based with high impermeability. • Can be tinted with a water based stainer. • UV resistant & very low dirt pick up. • Possesses anti-fungal & anti-algae properties. • Aesthetic appeal & protection against water. • Can with stand temperature shocks & it is non-toxic.

Application : • All types of exterior plastered masonry surfaces, concrete, cement sand renderings, etc.
• Applicable on asbestos sheets.

Application Guidelines : **Surface Preparation** : • The surface should be clean from any loose dust particles, grease or any old flaking paints. Any growth of fungus or algae has to be removed by wire brush followed by water cleaning. • All surface cracks up to 5mm width should be filled with crack seal. Crack more than 5mm and all separation gaps should be filled up with Lion Premium SBR Latex modified mortar or as specified.

Recommended application :
Primer : 1st coat of primer (Lion Premium SBR Latex)
Finish : Two coats of Lion Tuff Coat.

Dilution : • 1st coat of Lion Easy Cot-5% dilution with, potable water.
• 2nd coat should be used undiluted to get required DFT.

Coverage : 35 to 40 sq. Feet In two coat. (Coverage may vary depending upon the texture and porosity of the surface.

Packing : 1kg, 5kg, 10kg, 20kg

Method : By brush, roller & spray.

Technical Specification : Nature: Single component

Appearance : White

Elongation(250 mic. DFT) : >200% (ASTM D 2370)

Resistance to water Penetration (0.2 Kg/cm)

Re coating Period : 5-6 hours (at 30⁰c)

Pull off Adhesion : 1.3 Mpa (ASTM D 4541)

Coating thickness : 110-120 mic. DFT for 2 coats

Shelf Life & Storage : Shelf life is 12 months from the date of manufacturing.
Store in shed, protecting from direct sunlight and away from extreme temperature.
In extremely hot temperature condition, store in a temperature controlled environment(i.e. Less than 30⁰c)

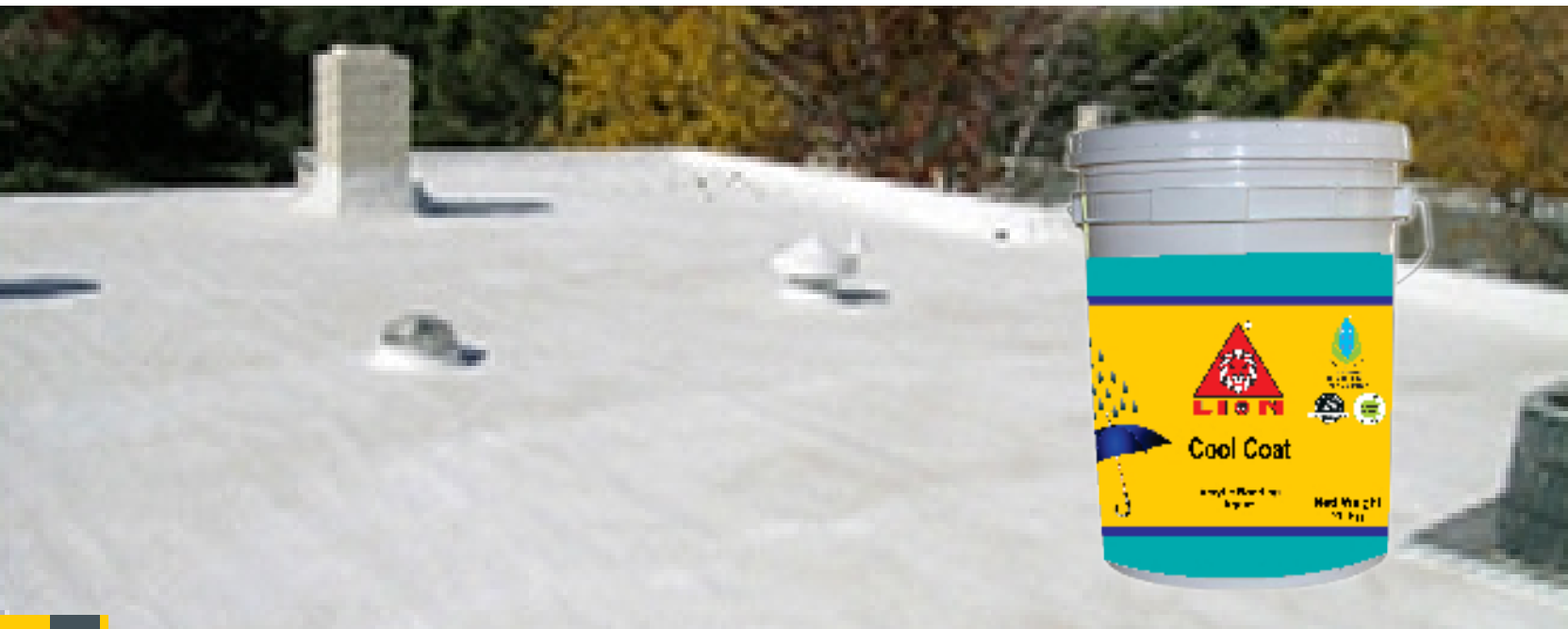




Lion Cool Coat

Acrylic Bonding Agent

- Product Specification** : Lion Cool Coat is acrylic based waterproofing compound & bonding agents.
- Features** : Excellent adhesion to cementitious substracts.
Work as an affective bonding agent by facilitating more open time.
Suitable for internal & external application.
Can modified mortar & concrete for specifies requirements in repairs.
- Application** : Dam & Reservoir Tank.
Water resistant renders or plasters.
Useful as an additive for making repair mortars & concretes.
- Technical Specification** :
- Color** : White liquid
- Base** : Acrylic Latex Polymer
- Coverage** : 75-85 sq.ft / kg on concrete / plaster surface as a new coat. 30sq.ft per coat on a brick masonry surface (mixed with cement)
- Packaging** : 1kg, 4kg, 10kg, 20 kg.



Lion Heat Guard

Heat Insulating Cum Exterior
Waterproofing Coating



PRODUCT SPECIFICATION : Lion Heat Guard is a heat reducing cum waterproofing coating composed of acrylic polymer, microspheres, property selected & graded Inert fillers, light fast & weather durable white pigment, additives & water as medium. It is used as heat insulating coating on building rooftops & exterior walls because it help in reducing power consumption substantially by reducing the load on air-conditions and keeps the interiors cool with additional function of waterproofing.

Features :

- Reduces the conductivity of heat from exterior to interior, thus lowers the temperature.
- Water based with high impermeability.
- Can be tinted with a water based stainer.
- UV and IR resistant.
- Possesses anti-fungal & anti-algae properties.
- Aesthetic appeal & protection against water.
- Non-toxic water based system
- Reduction in electrical consumption for air- conditioner, save energy coast

Application :

- Terraces and rooftops of building-cemenlitious, asbestos & metal surface
- Exterior walls of buildings.
- Cold shortages, computer server rooms. electrical control panel rooms, etc
- Metal & concrete storage tanks for water, chemicals and fuel in petrochemical industry

Application Guidelines :

Surface Preparation :

- The surface should be clean from any loose dust particles, grease or any old Raking paints. Any growth of fungus or algae has to be removed by wire brush followed by water cleaning.
- All surface cracks up to 5mm width should be filled with crack seal. Crack more than 5mm and all separation gaps should be filled. up with Lion Premium SBR Latex modified mortar or as specified.

Recommended application :

Primer : 1st coat or primer (Lion Prime Coat) **Finish** : Apply 3 coats of Lion Heat Guard

Lion Heat Guard Dilution : • Apply first coat of Lion Heat Guard 5% dilution with potable water. • Apply 2 coats of Heat shield without any dilution by brush or roller at an interval of 5-6 hrs.

Technical Specification :

Nature : Single component **Appearance** : White **Elongation** : >150 %

Re coating Period : 5-6 hours (at 30°C) **Coating thickness** : 110-120 mic. DFT for 2 coats

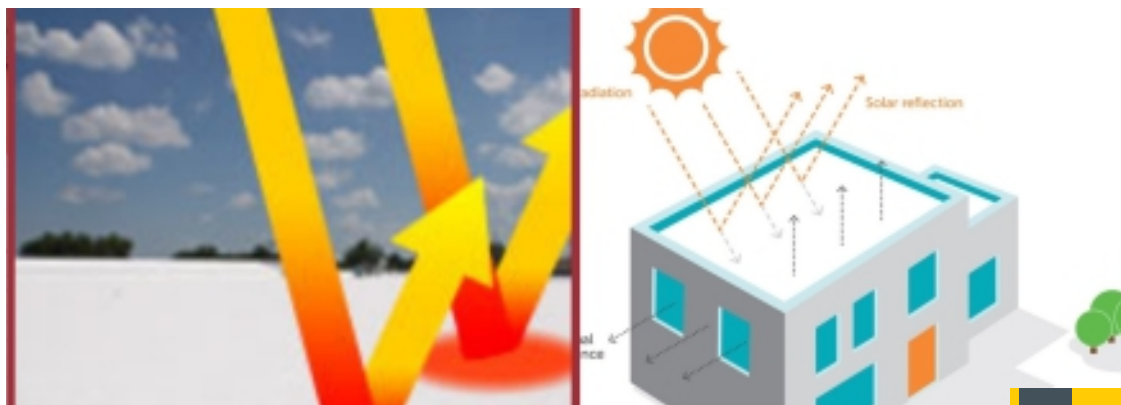
Method : By brush, roller & spray.

Shelf Life & Storage : Shelf life is 12 months from the date of manufacturing.

Store in shed, protecting from direct sunlight and away from extreme temperature.
In extremely hot temperature condition, store in a temperature controlled environment(I.e. Less than 30°C)

Coverage : 20 to 25 sq. Feet in two coals. (Coverage may vary depending upon the texture and porosity of the surface.)

Packing : 1kg, 4kg, 10kg, 20kg





Lion Easy

**Heavy Duty Reinforced
Acrylic Waterproofing
Membrane**

Product Specification : Lion Easy is an acrylic co-polymer based highly flexible elastomeric coating for building Exteriors. It is used as a liquid applied waterproofing membrane for all types of building terraces. The coating performance can be enhanced for large roofs, by providing a fiber mesh that is embedded or sandwiched between the coats.

Features :

- Good crack bridging property.
- Water based with high impermeability.
- Can be tinted with a water based stainer.
- UV resistant.
- Possesses anti-fungal & anti-algae properties.
- Aesthetic appeal & protection against water.
- Can with stand temperature shocks.
- Better film thickness. (provides 1mm dry film thickness in 3 coats)
- High tensile strength & bonding strength.
- Non- toxic, breathable

Application : Mainly designed for exterior Building roofs/ Terraces, RCC & cement & plaster surface. Slopping roofs, chaja & parapet walls.

Technical Specification :

Nature : Single component **Appearance :** White **Re coating Period :** 5 hours (at 30° C)

Performance Properties (After 7 Days Cure) :

Tensile Strength (Mpa) : 1.5 Mpa (ASTM D 2370) **Elongation(%) :** 300% (ASTM D 2370)

Pull off Adhesion : 1.3 Mpa (ASTM D 4541) **Initial Hardness (Shore A) :** 65 (ASTM D 2240)

Resistance to water Penetration (0.2 Kg/cm) for 6 hrs : 0 mm (Adopted DIN 1048)

Coverage : 25 to 30 sq. Feet in three coat.

Method : By brush, roller & spray.

Packing : 1kg, 5kg, 10kg, 20kg

Application Guidelines :

Surface Preparation : The surface should be clean from any loose dust particles, grease or any old flaking paints. Any growth of fungus or algae has to be removed by wire brush followed by water cleaning.

Recommended application :

Primer : 1st coat of primer (Lion Prime Coat)

Finish : Three coats of Lion Easy coating.

Dilution : • 1st coat of Lion Easy-5% dilution with potable water. • 2nd coat of Lion Easy-5% dilution with potable water. • 3rd coat should be used undiluted to get required DFT.

Shelf Life & Storage : Shelf life is 12 months from the date of manufacturing.
Store in shed, protecting from direct sunlight and away from extreme temperature.
In extremely hot temperature condition, store In a temperature controlled environment (i.e. Less than 30°C)





Lion Salt Guard

- Features** :
- Excellent alkali & efflorescence resistances.
 - Excellent substrate penetration & top-coat adhesion.
 - Physical barrier to water transport.
 - Chemical barrier to salt migration.
- Benefits** :
- Long-life high-class appearance of topcoat.
 - Ideal for high-alkaline concrete.
 - Less topcoat & re-painting required.
 - Prevention of top coat defects.
- Description** :
- Salt Guard 2020 is a specially Salt Based coating which acts as an anti-efflorescence coating and prevents the growth of anti-micro able bacteria and salt formation on the wall.
- Application Area** :
- To be applied over concrete, plastered or brick, masonry surfaces.
- Typical Characteristics :**
- | | |
|---------------------------------------|-----------------------------------|
| Nature | : Single component, liquid |
| Color | : Yellow |
| Specific Gravity at 30 ^o C | : 1.03 ± 0.03 |
| Inter-coat interval | : 4 to 6 Hrs |
| Dilution | : No Dilution |
| Coverage | : 70-80 sq. ft. per 2 coats/ ltr. |
| DFT | : 100μ |
- Directions For Use** :
- Clean the surface with Salt Guard 2020 (separately available) brush and ensure no loose particle remains on the substrate. On the clean and dry substrate apply it with the help of a brush. Application is to be done till saturation level is achieved. Allow it to dry for 1-2 Hrs. then apply second coat and after 24 hrs apply top coating.
- Cleaning of Tools And Equipment** :
- Tools and equipment can be easily cleaned with water. If dries, it should be scrapped off.
- Storage And Shelf Life** :
- In order to preserve all the properties, store the material in the original un-opened containers in cool and dry place.
Shelf life is 24 months



Lion PP Fibre



Description : Lion PP FIBER is polymerized propylene based construction purpose fiber.

Recommended : Lion PP Fiber is very light, Highly resistant, Emerging as true crack - control reinforcement, structural fibers have gained a stronger foothold in concrete.

Reduced Bleeding. Flexural Toughness. Enhanced Impact Resistance.

Fire Resistance. Comparison of Lion PP Fiber Construction Fibers with Other Construction Fibers.

NOTE: Fibers has various advantages over other fiber available in Indian market. These fibers have been developed after various research and field trials. The fibers have been designed specifically to give better results when used in concrete.

Packing : 20 gm

Material	Glass	Polyester	Other PP	Lion PP Fiber	Remarks
	Glass	Polyester	Polypropylene	Polypropylene	Polypropylene is Most favored Material Internationally.
Density	2.40	1.38	0.91	0.91	Number of Fibers in Polypropylene is 2.64 Time More compared to Glass and 1.52 times more compared Polyester
Type	Monofilament	NA	Mono Filament Multi Filament	Multi Filament	For same weight multi filament contains maximum number of fibers compared to monofilament and fibrillated fibers
Alkaline stability	Unstable	Unstable	Stable	Stable	Cementitious medium and most of the construction chemicals are alkaline polypropylene is stable in very high alkaline medium.
Profile	Round	Triangular	Round	Triangular	Triangular profile gives 29 % more surface area hence it results in better bonding with the cementitious matter.
Chemical Treatment	NA	NA	NA	YES	Chemical treatment has been done for better dispersion of Fiber and bonding of fiber with the cementitious matter
Melting Point	Above 140o c	Above 230oc	162 o c	162 ^o c	Due to low melting point it prevents spelling (explosion) of concrete is case of fire
Different mostly	Mostly 6 mm & 12 mm	6 mm & 12 mm	6 mm & 12 mm, 19 mm	3mm, 6mm 12 mm, 25 mm	Lion PP Fiber are available in various lengths, both micro (below 25 mm) & macro (above 25 mm) fiber for various applications.



Lion Power Bond



Multi-use, high bond, general purpose Epoxy Adhesive.

- Description** : Lion Power Bond Is available in (two par) Resin and Hardener with formulated mixing ration to obtain High bond with various construction related products I.e. metal, ceramic, stone, wood etc.
- Application For** : Various construction range products like ceramic, vitrified tiles, natural stone, metal, wood, vulcanized rubber, plastic and concrete surfaces.
- Advantages** : Multi Purpose
 Good resistance to static & dynamic loads
 Long Open Time
 High shear and bond strength
 Electric insulating
 Easy to apply
- Recommended Application** : Surface Must be treated and must be dry before application
 Joint surfaces should be cleaned with a good degreasing agent such as acetone iso-poploln for plastics, or any mechanical treatment to remove grease oil colour and dust
 Recommended layer is 0.05 to 0.10 mm for great lap shear strength to a joint Assemble the joint component immediately after application and till get proper cured Curing time at room temperature is approx 25° C is 7 To 12 Hours, it may decrease as temperature increased.

Properties	Lion Power Bond resin (Part 1)	Lion Power Bond Hardener (Part 2)	When Mixed
Colour (visual)	Creamy Viscous	Amber	Pale Yellow
Viscosity at 25 C (Cp)	50000	35000	45000
Pot life at 25 C	----	—	90 to 110 minute
Specific Gravity	Ca. 1.17	Ca. 0.96	Ca. 1.06
Mix ratio	100	80	—

- Safety** : Avoid Contact with eyes or skin. In case of eye contact, wash with water and incase of skin contact call physician immediately.
- Packing** : 900 gm & 1.8 kg
- Storage** : Store room temperature 20 to 25°C in factory sealed container.
- Shelf Life** : 2 Years if stored in factory sealed container.



Lion Epoxy Flooring

**FastoFix Epoxy Self Leveling Epoxy Flooring,
Three-Component Formulated Self Leveling
Epoxy up to 2mm, High Gloss Solvent Free system.**



Description : Lion Epoxy Flooring is a three Component epoxy system Formulated using 100% solvent free Bisphenol A along with Epoxy Hardener in order to provide self-leveling High -Gloss Epoxy Toppings with very Low VOC

Surface Treatment : Coatings Floors in all industries such as automobile. Engineering, Pharmaceuticals, Tool Rooms, Machine Shops, Food and Chemical Manufacturing units etc.
Special grade Epoxy especially to suit transformer industry where high loads are moved on air castors.

Recommended : **Primer :** Apply Lion Prime Coat on dry surface @ 150 grams /sq meter approximately and do not mix it

Application with any filler. In case of damp or under prepared or old surface use Lion Prime Coat.

Usage Instructions : Open the resin can and mix it with pigment. Use 300 Grams of pigment in case of dark shades or up to 350 grams in case of very light shades. Mix the pigment and Resin for few minutes and add filler slowly and mix until a thick free flow solution is made. Add Hardener and mix for 2-3 minutes. Apply using Notch Trowel of required size and finish using spike rollers. Application Thickness 1-2mm.

Drying Characteristics : **Drying Time :** 12 Hours after application. Walk dry 24 Hours. Full Load minimum 48-60 Hours @ 30 degree Celsius.

Storage Instructions : Material may be stored in cool & Dry conditions.

Technical Specifications :

Property	Values
Compressive Strength (psi)	6500-7000
Tensile strength (psi)	2000-2200
Flexural Strength (psi)	4000 4Kg

Mixing ratio : Resin with 2 Kg hardener and 8 kg filler, pigment 300 grams per kit add 50 grams extra for light shades for 1 mm. For 2mm, 4 kg resin with 2kg hardener and 10 kg filler for 2mm (pigmented 2mm)

Shades : All Colour tech Shades
Pot Life@ 30 Deg Celsius 45 minutes

Shelf Life : 6 Months.



A COMPLETE BUILDING SOLUTION



Client List



A COMPLETE BUILDING SOLUTION



LION INDUSTRIES

H.O. : 120, First Floor, Radhe Fortune, Nr. Apollo Circle,
Bhat, Ahmedabad, (Gujarat) INDIA.

Mfg by : 68, G.I.D.C., Ranasan, Mahudi-Vijapur Road,
Dist. Mehsana (Gujarat) INDIA.

Customer Care



: +91 8155066119



: info@lionbuildingsolution.com



: https://twitter.com/@Building_lion



: www.facebook.com/Lion Building Solution



: lion_building_solution



: www.lionbuildingsolution.com